



# TIME TO RE TH NK RURAL MOBILITY

30-31 January 2019

Albert Borschette Congress  
Center (CCAB)  
Rue Froissart 36, 1040 Brussels (BE)



## *The SMARTA approach*

*Giorgio Ambrosino*

**MemEx Srl**

[www.ruralsharedmobility.eu](http://www.ruralsharedmobility.eu)

# Mobility is being transformed throughout Europe



SUMPs

*ITS systems*

Smart cities

Low emission zones

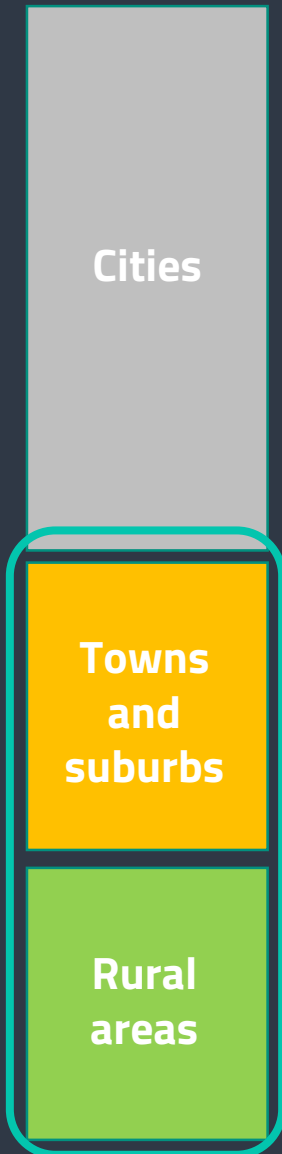
White Papers on urban transport

...



?

# Rural areas also need attention



Distribution of population (%) by degree of urbanisation, EU-28 Eurostat 2017 (estimated)

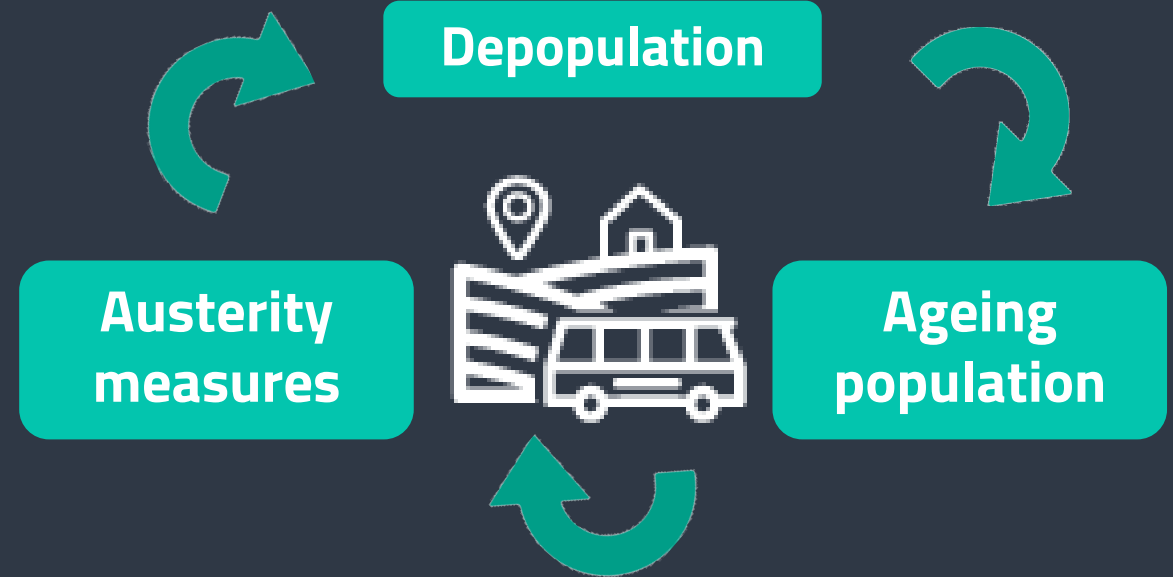
**2017**

**27%**

*Of the EU's population lives in rural areas*

**24%**

*Of the EU's rural population is at risk of poverty or social exclusion*



*See Laurie's presentation*

# Rural Areas are highly Auto-dependent with limited mobility choice

✓ those **with cars** use them for most travel



✗ those **without cars** are dependent on others for lifts, often meaning they have reduced possibilities to participate in society





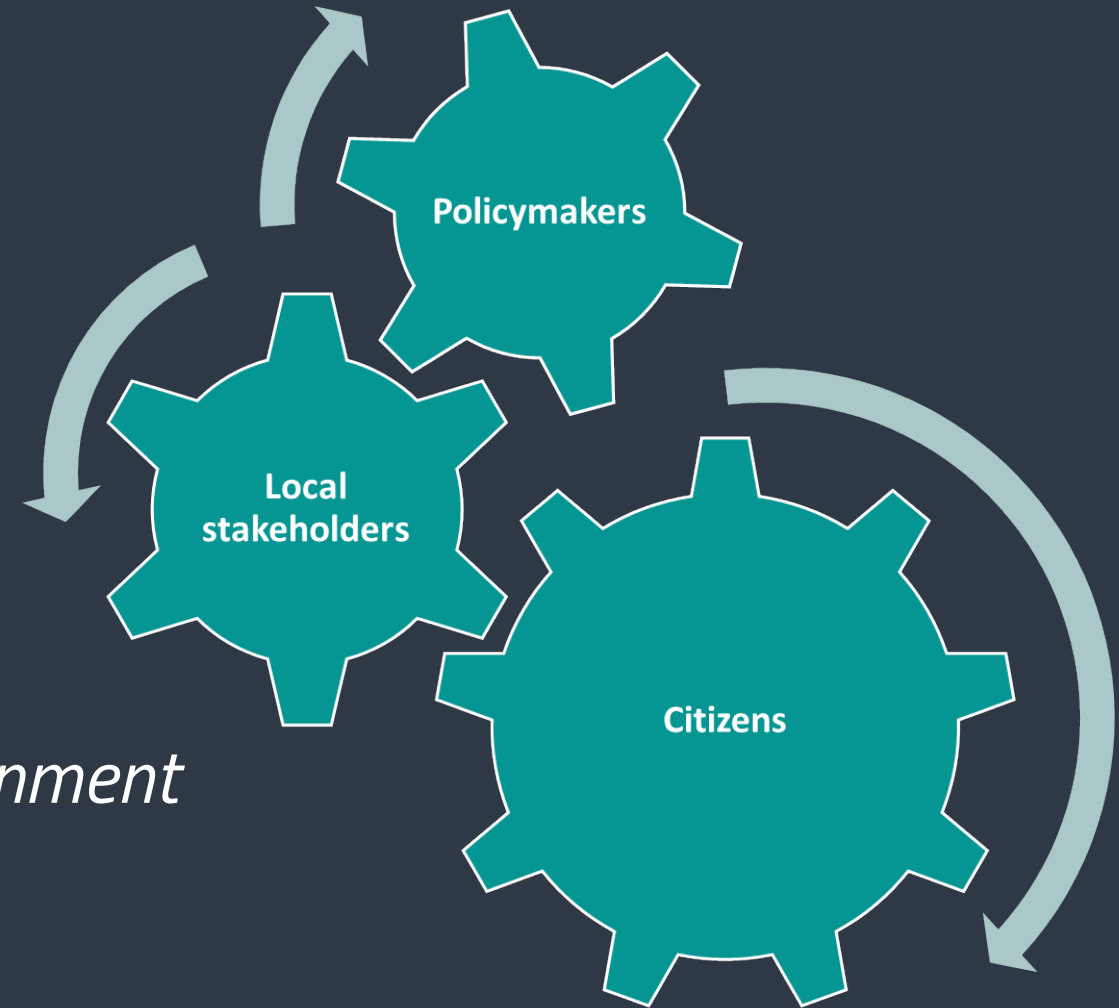
## Time to rethink rural mobility

*New vision for sustainable mobility*

*Revitalise rural areas*

*Improve social cohesion and quality of life*

*Improve transport opportunities and environment*



# The SMARTA Project



Explore ways to ensure sustainable mobility by improving shared/public transport services across different European rural areas



# The **SMARTA** Project



The particular focus of SMARTA is “**shared mobility**” in rural areas integrated with **public transport**, in order to make more extended and accessible the public transport **network** and the local **services**

## **Shared mobility** in rural area



Combining travellers more efficiently by different service schemes



Improving the availability and integration of transport offer and mobility options



Support (e)-services such as user info, booking, ticketing, fleet control, .....

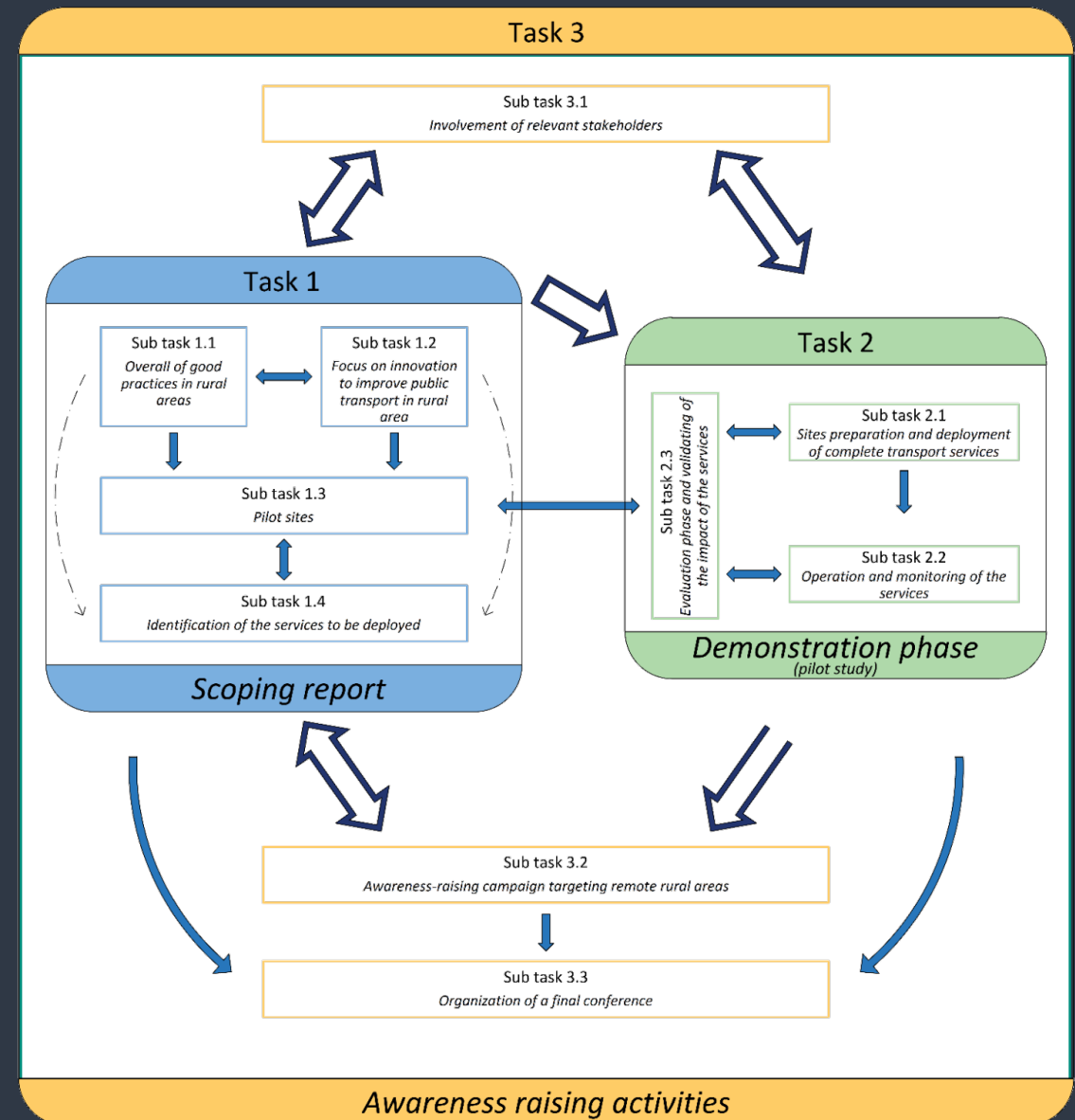


# The SMARTA Project

- ✓ Sponsored by EP and managed through DG MOVE
- ✓ Starting date: 3<sup>rd</sup> May 2018
- ✓ Duration: 30 months
- ✓ 3 Main strands of activities:

**Research, Demonstration, Engagement**

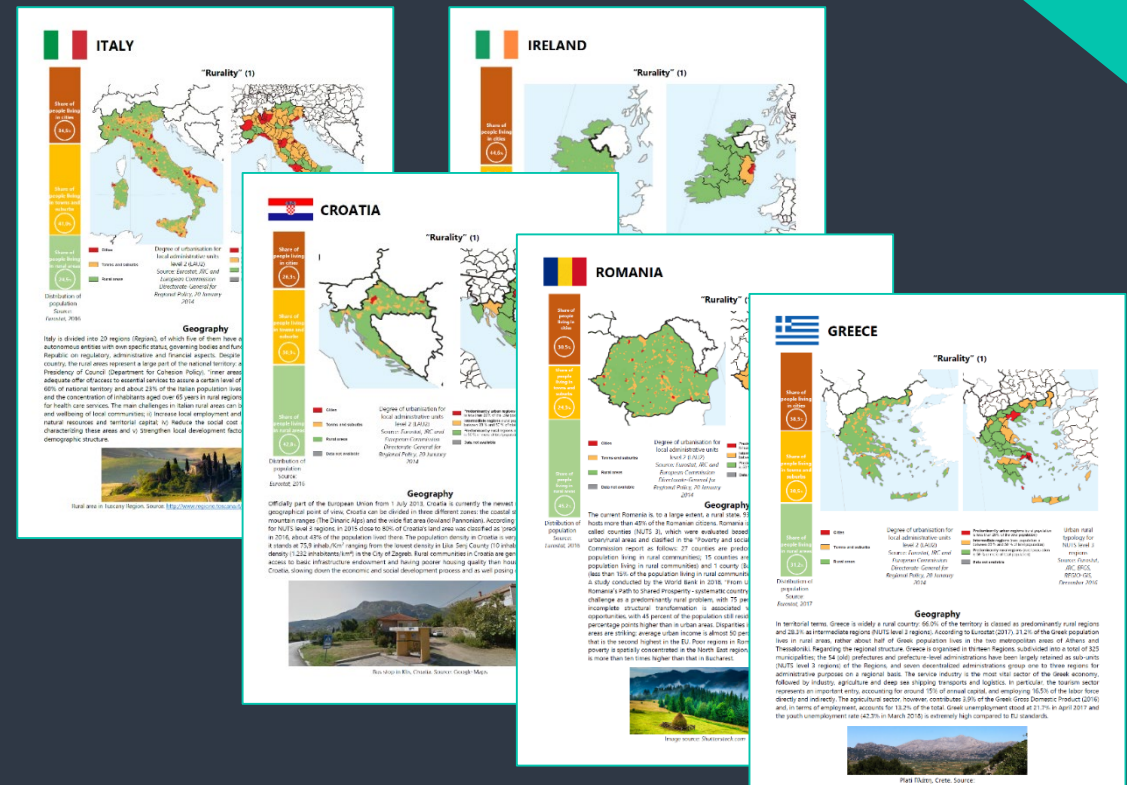
*Recommendations and Guidelines*





## "Insight Papers"

Analysis of the challenges of mobility in rural areas and the framework in each of the 28 EU countries (including selected EEA states, North America and Australia)

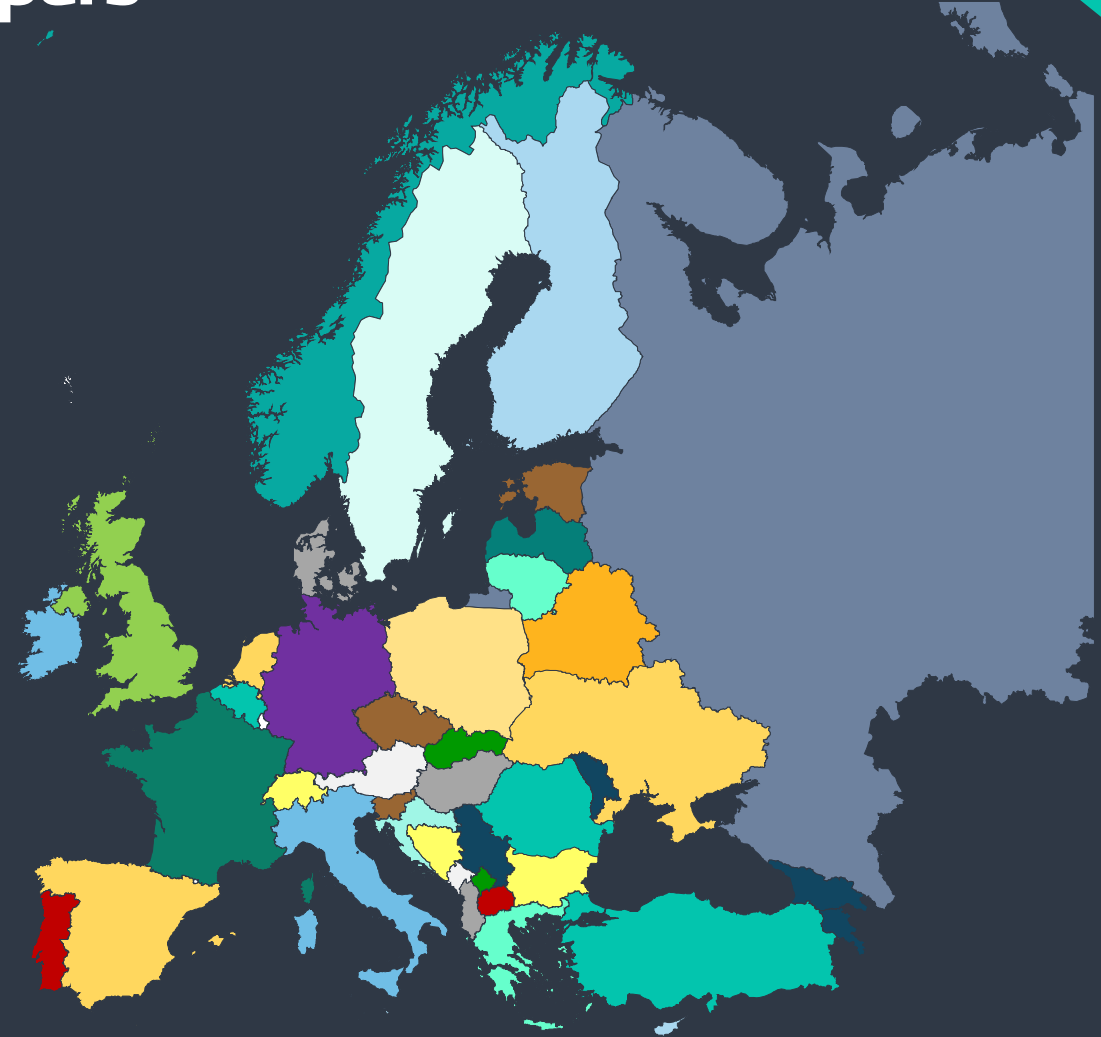
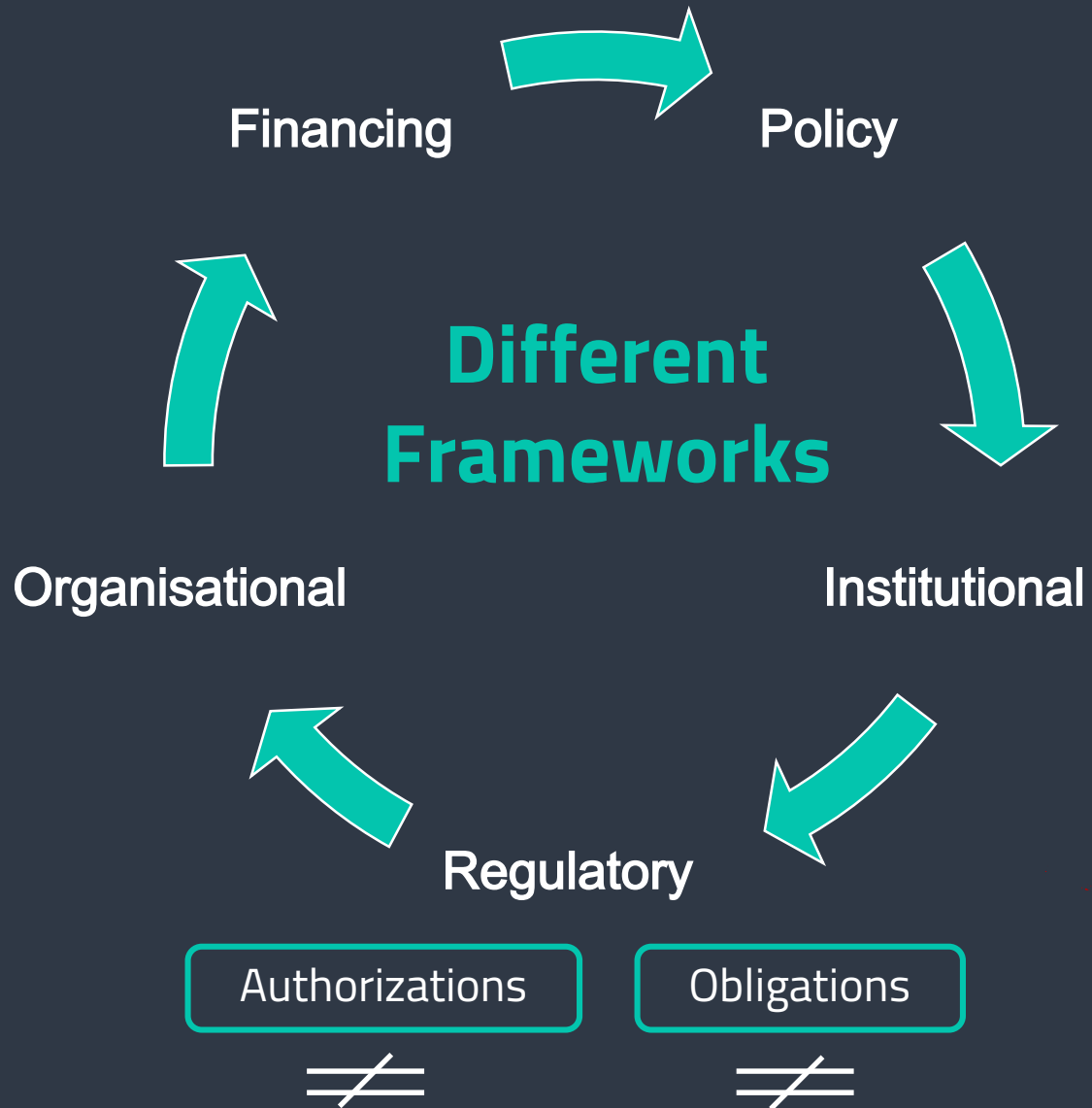


# "Good Practices"

# Comprehensive overview of Good Practices in rural shared mobility from around Europe and beyond

[illegible]

# Insight Papers



*See Mark's presentation*

# Good Practices

## A. Transport and mobility services in rural areas

### **A.1 TRANSPORT SERVICES ADDRESSING TARGET USER GROUPS**

- Solutions for all the population especially the disadvantaged (in terms of accessibility, availability, costs, tools etc.)

### **A.2 ICT IN PUBLIC TRANSPORTATION AND SHARED MOBILITY**

- Technologies that enable more efficient planning of journeys
- Simulation of advantages and disadvantages
- Fleet management and real time information
- Multimodal travel planners
- Autonomous shuttles

### **A.3 INTERMODAL SERVICE COORDINATION**

- Transport solutions at bus/train stations for last mile connectivity

### **A.4 EASY MOBILITY**

- Active modes, including sharing of bikes and e-bikes

## B. Good Governance Enabling Sustainable Rural

### Mobility

### **B.1 SYSTEMS AND SOLUTIONS FOR SMART RURAL AREAS**

- Financially viable systems
- New business concepts and solutions for improving the accessibility of rural areas

### **B.2 STRATEGIES FOR INCREASE RIDERSHIPs**

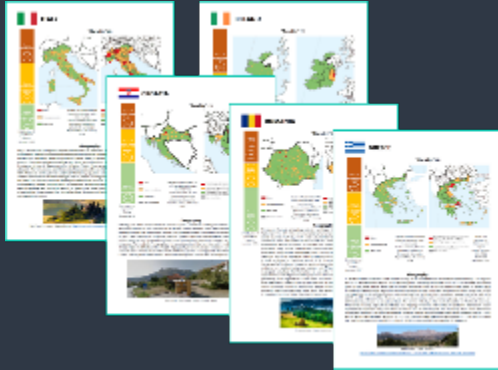
- Good marketing campaigns
- Improvement of the systems reliability
- Attractive fares

### **B.3 COMMUNITY-BASED TRANSPORT SERVICES**

- Local initiatives involving the community to identify transport solutions
- Needs assessment campaigns

*See Richard's presentation*

## "Insight Papers"



## "Good Practices"



New **vision** of rural **mobility** from different aspects for improving the **accessibility** in **rural** areas

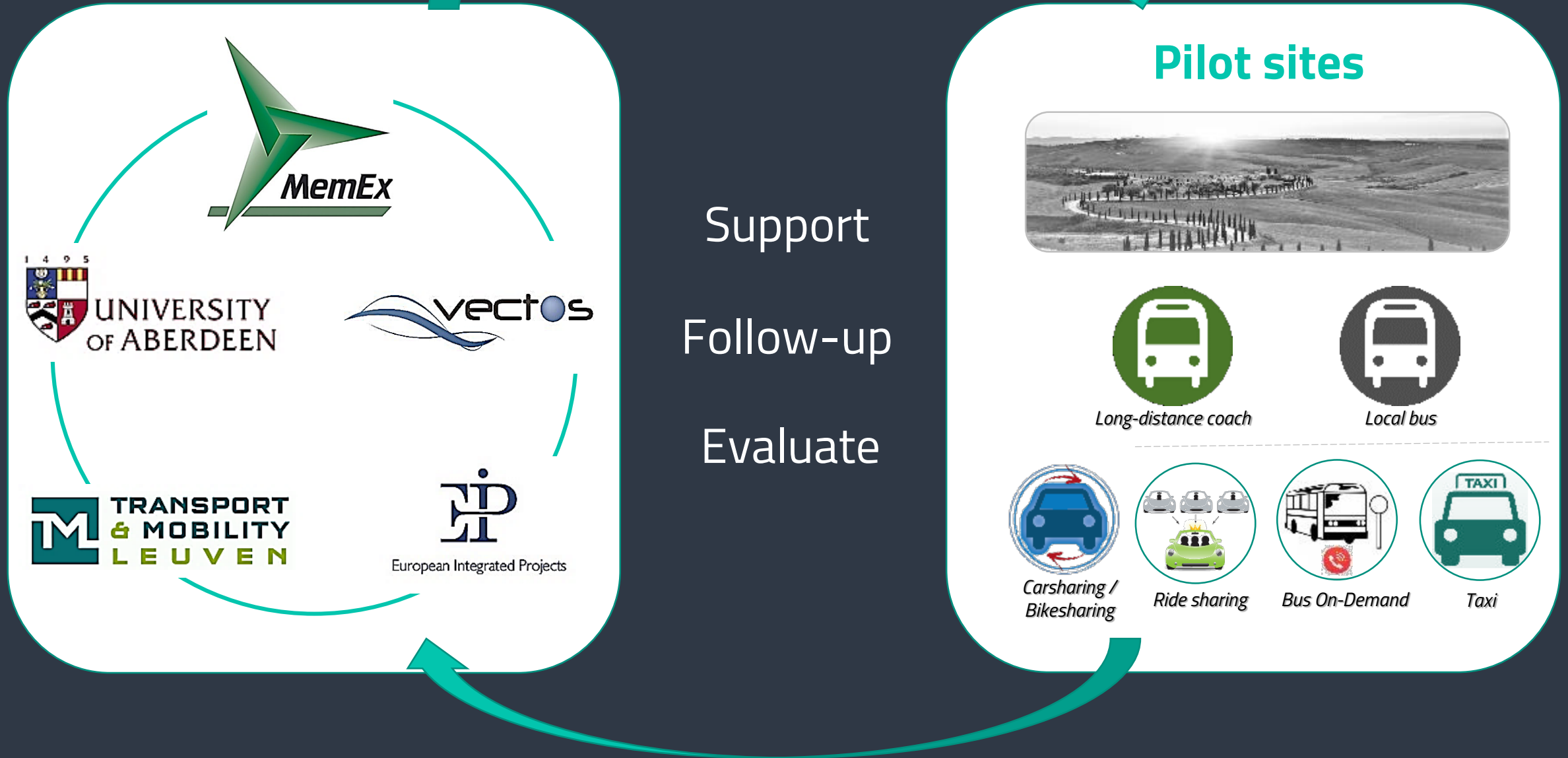
Institutional,  
regulatory and  
financial  
framework

Organization and  
key responsibilities  
on rural transport

Integration  
of rural  
areas in  
wider areas

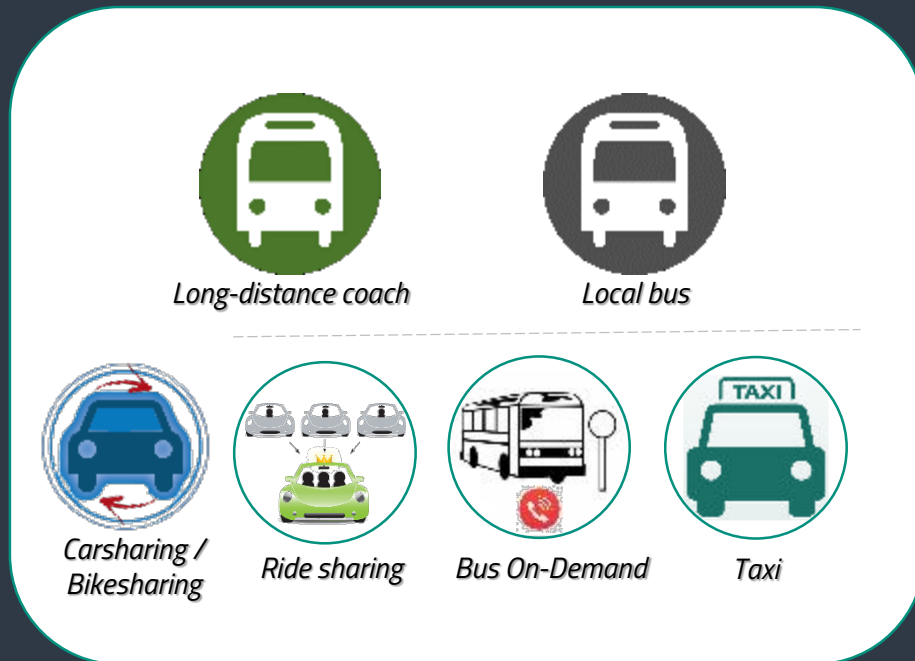
Integration of shared mobility  
services and related policies for  
improving accessibility in rural  
areas





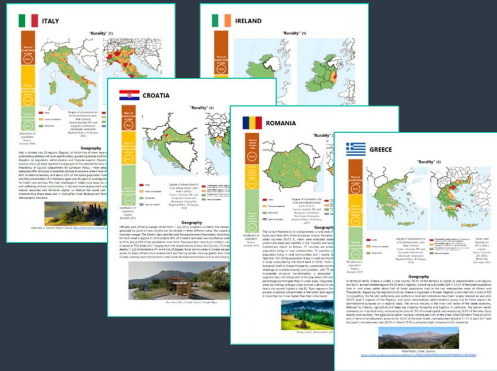
# Pilot Demonstration sites

✓ **Validation and evaluation in real-field conditions** of the **effectiveness, efficiency, response, impacts** and **future prospects** for shared mobility services connected with public transport



*See Dirk's presentation*

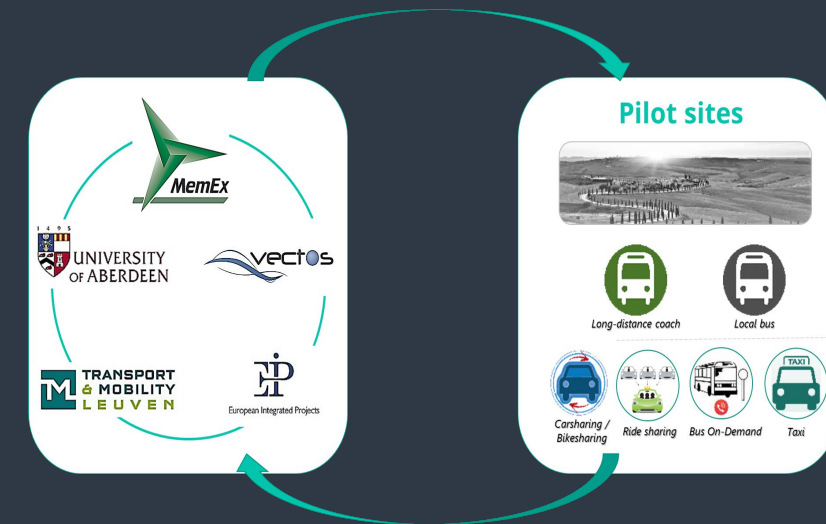
## "Insight Papers"



## "Good Practices"



## Pilot sites



## Stakeholder's Engagement

Gain a deep understanding about the key findings, lessons learnt and transferability issues of different mobility experiences in rural areas across Europe

3<sup>rd</sup> of May 2018

November 2020

Source: <http://www.unsabenculturali.it>

Deeper **answers** to the questions facing  
European and **national political**,  
**administration** and **practitioner** layers.

*How policy should be developed for rural shared mobility*



*What solutions work best in what contexts?  
What impacts they can have on economic, social and environmental challenges?*



*Whether/how to develop shared mobility solutions integrated with public transport*



*Which are the appropriate roles for communities, authorities and private sector*



**TIME TO  
RE  
TH  
NK  
RURAL  
MOBILITY**

*30-31 January 2019*

Albert Borschette Congress  
Center (CCAB)  
Rue Froissart 36, 1040 Brussels (BE)

The **SMARTA workshop** is the first of a series of events organized by the SMARTA consortium for bringing together **mobility stakeholders** to **listen, discuss** and **provide** their **perspectives** and recommendations on the current situation of **rural mobility** in Europe.



# TIME TO RE TH NK RURAL MOBILITY

*30-31 January 2019*

Albert Borschette Congress  
Center (CCAB)  
Rue Froissart 36, 1040 Brussels (BE)



# *Thank you!*

Giorgio Ambrosino, MemEx  
[giorgio.ambrosino@memexitaly.it](mailto:giorgio.ambrosino@memexitaly.it)

[www.ruralsharedmobility.eu](http://www.ruralsharedmobility.eu)