

SMARTA Brussels

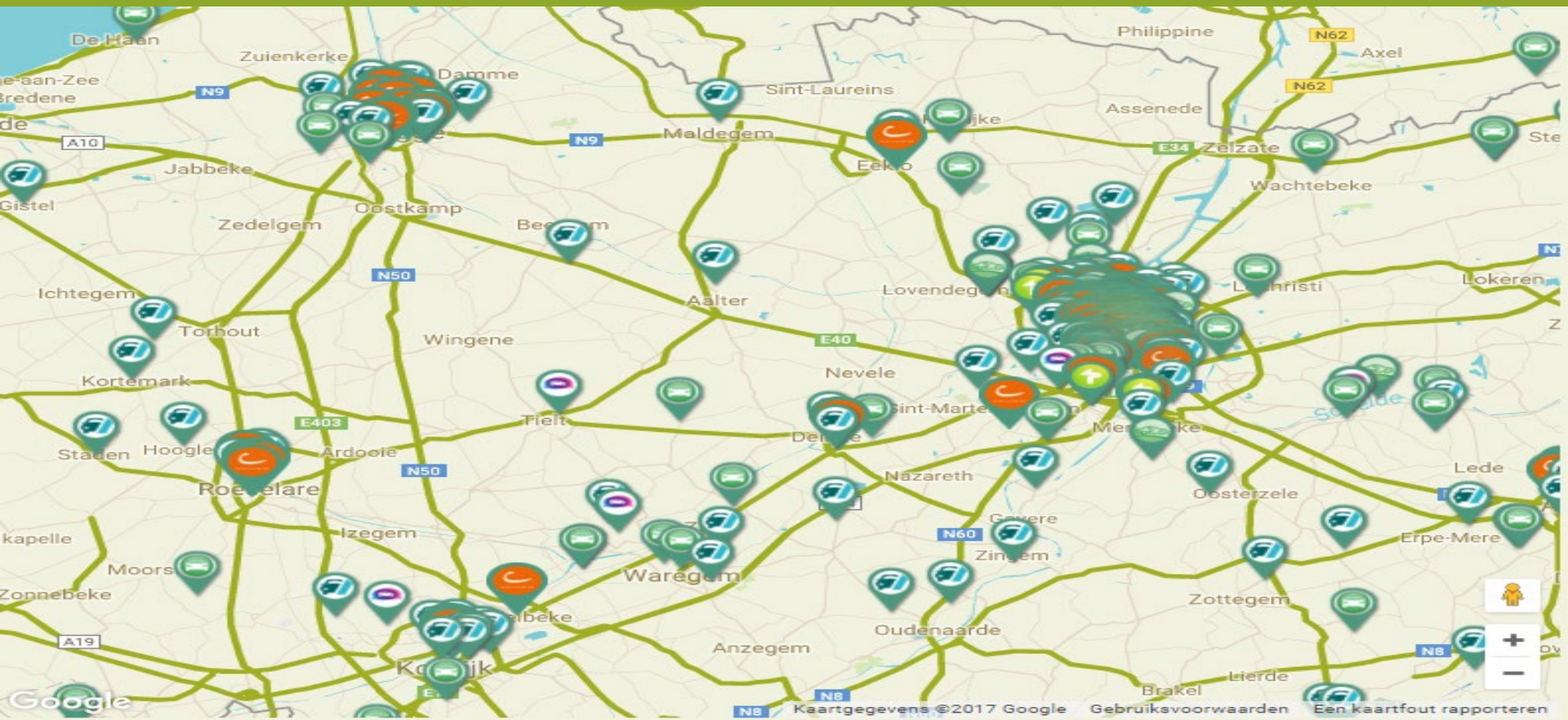
## Shared mobility The Rosetta stone for rural areas!







# Carsharing: only in big cities?



=> Carsharing amongst neighbours  
=> P2P carsharing

# Costbased versus P2P



=> 4.000  
Households  
=> 500 closed  
groups

## Among neighbors

Costbased

Long time  
contract

Tailor made

## P2P carsharing

Market  
price

Contract /  
transaction

Platform  
makes rules



=> 1.500 cars

## Sharing fleets local governments

=> Outside office hours  
=> The ideal match!



=> 20+ cities with  
less then 40 k  
inhabitants



Autodelen.net



Care  
organisation

Partago

Local  
government





# Mesen and Hill Country Results

- ⇒ Monthly 20 + trips including driver
- ⇒ 10 other users



Contacteer de  
mobiliteitsassistenten  
Ze staan helemaal voor je klaar



 **Bel ons**  
0496 56 21 71 of 0496  
56 21 70

=> 2019 replication in 11 locations

# De ideale woning: social housing and carsharing

- ⇒ Car for renters of social housing
- ⇒ And neighborhood



=> Different pricing: social pricing



# AVIRA: Wheel chair friendly carsharing

- ⇒ Partnership care center
- ⇒ 15 projects
- ⇒ The ideal match!

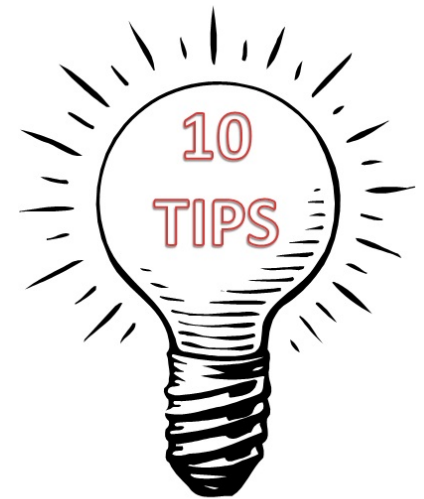


Neighbours and  
employees  
=> use + volunteer



# How to make carsharing work in smaller towns?

1. Key player: Local authority
2. Plan it!
3. Start with sharing own fleet
4. Promote car sharing in general
5. Permanent promotion on every level
6. Don't focus on the first car
7. Cooperate! Find the right partners
8. Be creative!
9. Be patient!





Thank you!

Autodelen.net / Carshare Belgium

jeffrey@autodelen.net

<https://be.linkedin.com/in/jeffreymatthijs>

A photograph of an astronaut in a white spacesuit standing next to a lunar rover on the moon's surface. The rover is a four-wheeled vehicle with a large parabolic antenna on a mast. The background shows the dark, cratered landscape of the moon under a bright sky. The text "We can Take it to the moon!" is overlaid in red at the bottom.

**We can Take it to the moon!**